

www.electroprecios.com.ar



materiales eléctricos

Smarttray[®]

By **SAMET**

LA EVOLUCIÓN INTELIGENTE

THE INTELLIGENT EVOLUTION



GARANTÍA SAMET
/WARRANTY SAMET



VELOCIDAD
/SPEED



SIMPLICIDAD
/SIMPLICITY



SEGURIDAD
/SAFETY



PROVISIÓN RÁPIDA
/FAST PROVISION

 www.samet.com.ar

 / SametBandejasPortacables

Calle 27 N°324 Mercedes, Bs As Te: 02324- 432900/421292



02324 15520921

mail: ventas@electroprecios.com.ar

VENTAJAS DE LA EVOLUCIÓN INTELIGENTE

The advantages of our
intelligent tray



**Alojamiento para
tapa encastrable**

*Self coupling covers
do job faster*



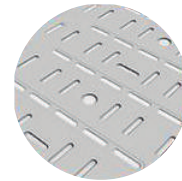
**· Alojamiento para
interconexión equipotencial**

Grounding hole



**· Protección de cables
y refuerzo de las uniones**

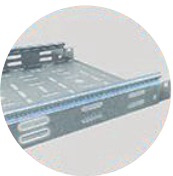
*All edges are rounded to
protect cables*



**· Cantidad y variedad de perforaciones
que permiten fijar y asegurar la bandeja
a cualquier soporte, maximizando a su
vez la disipación de calor**

*Multiple holes allow installers to ensure
coincidence with possible adaptations or the
ones of the supports.*

*Also, a huge quantity of holes gives a better
air flow to cables*



**· Perforaciones laterales
aumentan la versatilidad
y la ventilación**

*Lateral holes makes a higher
versality tray with more air flow*



**· Bordes redondeados sin filos ni
aristas para preservar la protección de
los cables y/o instaladores**

Round edges to protect installers and cables



**· Sistema de encastre que
permite un montaje
5 veces más rápido,
seguro y eficiente**

*Self coupling ends allows a
faster and easier installations of
trys. Smarttray is 5 times faster
than the common ones.*



**· Perforaciones embutidas para el
alojamiento de tornillos de fijación con
mínimo contacto con los cables**

*Inlaid fitters hide bolts so they
don't touch cables.*

El paso a paso

/ Step by step



Unión Bandeja

Smarttray I Smarttray Cable tray



Fijación Tapa

Tapa Smarttray I Smarttray Cover

• Los 3 pilares de Smarttray / The 3Ss of Smarttray



SEGURIDAD

/ SAFETY

Menos riesgos para vos y para los cables

Less risk for you and for cables

-Bordes redondeados

/ Rounded edges

-Perforaciones embutidas: reducen el contacto de las tuercas con los cables

/ Inlaid fitters: reduce contact of bolts with cables.

-Nervadura inteligente: en cada unión un nervio protege la aislación de los cables y refuerza el vínculo entre los tramos

/ Intelligent nerve insulates cables and also causes stronger unions.

-Conexión equipotencial: alojamiento en cada tramo, facilita tanto la velocidad como la seguridad de las instalaciones

/ Grounding hole in each cable tray makes easier and safer installations.



VELOCIDAD

/ SPEED

Incrementa la productividad 5 veces

Speed- Increase installation productivity 5 times

-Sistema encastrable permite un montaje 5 veces más rápido, sin cuplas ni accesorios extras

/ Self coupling ends allows a faster and easier installations of trays. Smarttray is 5 times faster than the common ones. No need of splice plates!

-Tapas encastrables: mucho más rígidas y sin grampas ni accesorios!

/ Self coupling covers accomplish faster installations. No need of extra accessories!



SIMPLICIDAD

/ SIMPLICITY

Instalaciones con solo 3 juegos de bulonería

Simplicity - only 3 bolts and nuts needed for installation

-Evitá accesorios extras: no más cuplas ni accesorios de fijación

/ Avoid extra accessories: no more splice plates or accessories.

-Versatilidad: perforaciones laterales y variedad de las mismas permiten instalaciones más sencillas

/ Versatility: Multiple holes allow installers to ensure coincidence with possible adaptations

-Compatibilidad: el sistema Smarttray fue diseñado para ser 100% compatible con la línea perforada tradicional de Samet

/ Compatibility: Smarttray system was designed to be 100% compatible with the Samet traditional cable tray.

Unión Smarttray vs Sistema Tradicional

/ Smarttray system vs traditional system






Comparamos tiempo de instalación, productividad, peso, cantidad de ítems por unión y carga de trabajo admisible de una unión tramo con tramo.

/ A comparison of time, productivity, weight, number of items per union and safe working load, of installing two cable trays.

Smarttray
LA EVOLUCIÓN INTELIGENTE

vs.

SISTEMA TRADICIONAL
/ Traditional system

| | | |
|---|--|---|
|  Tiempo de unión / Time | 15 Seg. / Sec. | 75 Seg. / Sec. |
|  Productividad / Productivity | x5 | x1 |
|  Materiales por unión / Materials | 2 juegos de bulonería / carriage bolt with nut | 10 2 cuplas / splice plate 8 juegos de bulonería / carriage bolt with nut |
|  Peso de materiales de unión / Weight | 15 gr. | 140 gr. |
|  Carga de trabajo admisible / Safe working load | 133 Kg/m Ensayo para ancho 300mm, chapa #22 (0.7mm) / Test for width 300mm, thickness 0.7mm | 47 Kg/m Ensayo para ancho 300mm, chapa #20 (0.9mm) / Test for width 300mm, thickness 0.9mm |

SAMEL
Líder en Bandejas Portacables

Tramo recto / Cable Tray

| CÓDIGO Ref.Code | ANCHO Width | MEDIDAS NOMINALES en mm Measurement in mm | | LONGITUD Length |
|--------------------|----------------|--|----------------------|--------------------|
| | | ALA Height | ESPESOR Thickness | |
| TRPS-050-22-Z | 50 | 50 | 0.71 | 3000 |
| TRPS-100-22-Z | 100 | 50 | 0.71 | 3000 |
| TRPS-150-22-Z | 150 | 50 | 0.71 | 3000 |
| TRPS-200-22-Z | 200 | 50 | 0.71 | 3000 |
| TRPS-300-22-Z | 300 | 50 | 0.71 | 3000 |
| TRPS-450-20-Z | 450 | 50 | 0.89 | 3000 |
| TRPS-600-20-Z | 600 | 50 | 0.89 | 3000 |

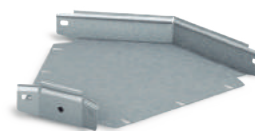


Curvas / Elbows



CURVA PLANA a 90° / Elbow 90°

| CÓDIGO Ref.Code | ANCHO Width | MEDIDAS NOMINALES en mm Measurement in mm | |
|--------------------|----------------|--|----------------------|
| | | ALA Height | ESPESOR Thickness |
| CPS-050-90-Z | 50 | 50 | 0.71 |
| CPS-100-90-Z | 100 | 50 | 0.71 |
| CPS-150-90-Z | 150 | 50 | 0.71 |
| CPS-200-90-Z | 200 | 50 | 0.71 |
| CPS-300-90-Z | 300 | 50 | 0.71 |
| CPS-450-90-Z | 450 | 50 | 0.89 |
| CPS-600-90-Z | 600 | 50 | 0.89 |



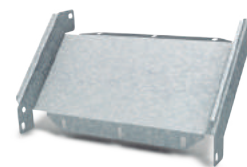
CURVA PLANA a 45° / Elbow 45°

| CÓDIGO Ref.Code | ANCHO Width | MEDIDAS NOMINALES en mm Measurement in mm | |
|--------------------|----------------|--|----------------------|
| | | ALA Height | ESPESOR Thickness |
| CPS-050-45-Z | 50 | 50 | 0.71 |
| CPS-100-45-Z | 100 | 50 | 0.71 |
| CPS-150-45-Z | 150 | 50 | 0.71 |
| CPS-200-45-Z | 200 | 50 | 0.71 |
| CPS-300-45-Z | 300 | 50 | 0.71 |
| CPS-450-45-Z | 450 | 50 | 0.89 |
| CPS-600-45-Z | 600 | 50 | 0.89 |



CURVA VERTICAL ASCENDENTE / Vertical Inside Elbow

| CÓDIGO Ref.Code | ANCHO Width | MEDIDAS NOMINALES en mm Measurement in mm | |
|--------------------|----------------|--|----------------------|
| | | ALA Height | ESPESOR Thickness |
| CUPS-050-A-Z | 50 | 50 | 0.71 |
| CUPS-100-A-Z | 100 | 50 | 0.71 |
| CUPS-150-A-Z | 150 | 50 | 0.71 |
| CUPS-200-A-Z | 200 | 50 | 0.71 |
| CUPS-300-A-Z | 300 | 50 | 0.71 |
| CUPS-450-A-Z | 450 | 50 | 0.89 |
| CUPS-600-A-Z | 600 | 50 | 0.89 |



CURVA VERTICAL DESCENDENTE / Vertical Outside Elbow

| CÓDIGO Ref.Code | ANCHO Width | MEDIDAS NOMINALES en mm Measurement in mm | |
|--------------------|----------------|--|----------------------|
| | | ALA Height | ESPESOR Thickness |
| CUPS-050-D-Z | 50 | 50 | 0.71 |
| CUPS-100-D-Z | 100 | 50 | 0.71 |
| CUPS-150-D-Z | 150 | 50 | 0.71 |
| CUPS-200-D-Z | 200 | 50 | 0.71 |
| CUPS-300-D-Z | 300 | 50 | 0.71 |
| CUPS-450-D-Z | 450 | 50 | 0.89 |
| CUPS-600-D-Z | 600 | 50 | 0.89 |

ESLABÓN UNIVERSAL PARA CURVA ARTICULADA

/ Universal Link for Adjustable Vertical Bend

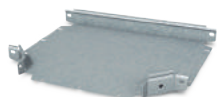
| CÓDIGO Ref.Code | ANCHO Width | MEDIDAS NOMINALES en mm Measurement in mm | |
|--------------------|----------------|--|----------------------|
| | | ALA Height | ESPESOR Thickness |
| EPS-050-Z | 50 | 50 | 0.71 |
| EPS-100-Z | 100 | 50 | 0.71 |
| EPS-150-Z | 150 | 50 | 0.71 |
| EPS-200-Z | 200 | 50 | 0.71 |
| EPS-300-Z | 300 | 50 | 0.71 |
| EPS-450-Z | 450 | 50 | 0.89 |
| EPS-600-Z | 600 | 50 | 0.89 |



* Ver figura 3 en Aplicaciones destacadas.
/ See figure 3 in featured applications

* Imagen a modo ilustrativa.
/ Image for illustrative purposes only

Uniones T / X / T/X Unions



UNIÓN T / Horizontal Tee

| CÓDIGO Ref.Code | MEDIDAS NOMINALES en mm Measurement in mm | | |
|--------------------|--|---------------|----------------------|
| | ANCHO Width | ALA Height | ESPESOR Thickness |
| TPS-050-Z | 50 | 50 | 0.71 |
| TPS-100-Z | 100 | 50 | 0.71 |
| TPS-150-Z | 150 | 50 | 0.71 |
| TPS-200-Z | 200 | 50 | 0.71 |
| TPS-300-Z | 300 | 50 | 0.71 |
| TPS-450-Z | 450 | 50 | 0.89 |
| TPS-600-Z | 600 | 50 | 0.89 |



UNIÓN CRUZ / Horizontal Cross

| CÓDIGO Ref.Code | MEDIDAS NOMINALES en mm Measurement in mm | | |
|--------------------|--|---------------|----------------------|
| | ANCHO Width | ALA Height | ESPESOR Thickness |
| XPS-050-Z | 50 | 50 | 0.71 |
| XPS-100-Z | 100 | 50 | 0.71 |
| XPS-150-Z | 150 | 50 | 0.71 |
| XPS-200-Z | 200 | 50 | 0.71 |
| XPS-300-Z | 300 | 50 | 0.71 |
| XPS-450-Z | 450 | 50 | 0.89 |
| XPS-600-Z | 600 | 50 | 0.89 |

Accesorios Complementarios / Accessories

DERIVACIÓN UNIVERSAL / Universal Extension Horizontal Tee

| CÓDIGO Ref.Code | mm ESPESOR Thickness |
|--------------------|----------------------------|
| DUPS-Z | 0.71 |

* 1 Pieza para todas las medidas
/ 1 Accessorie for all measures

* Ver figura 2 en Aplicaciones destacadas
/ See figure 2 in featured applications



DERIVACIÓN COMÚN / Extension Horizontal Tee

| CÓDIGO Ref.Code | MEDIDAS NOMINALES en mm Measurement in mm | |
|--------------------|--|----------------------|
| | ANCHO Width | ESPESOR Thickness |
| DCPS-050-Z | 50 | 0.71 |
| DCPS-100-Z | 100 | 0.71 |
| DCPS-150-Z | 150 | 0.71 |
| DCPS-200-Z | 200 | 0.71 |
| DCPS-300-Z | 300 | 0.71 |
| DCPS-450-Z | 450 | 0.89 |
| DCPS-600-Z | 600 | 0.89 |



UNIÓN LATERAL INTELIGENTE / Intelligent Splice Plate

| CÓDIGO Ref.Code | mm ESPESOR Thickness |
|--------------------|----------------------------|
| ULSZ | 0.89 |

* Ver figura 1 en Aplicaciones destacadas
/ See figure 1 in featured applications



EMBUDO PARA BAJADA EN FORMA PERPENDICULAR / Crosswise Vertical Tee Down

| CÓDIGO Ref.Code | MEDIDAS NOMINALES en mm Measurement in mm | |
|--------------------|--|----------------------|
| | ANCHO Width | ESPESOR Thickness |
| EMTS-050-Z | 50 | 0.71 |
| EMTS-100-Z | 100 | 0.71 |
| EMTS-150-Z | 150 | 0.71 |
| EMTS-200-Z | 200 | 0.71 |
| EMTS-300-Z | 300 | 0.71 |
| EMTS-450-Z | 450 | 0.89 |
| EMTS-600-Z | 600 | 0.89 |



FINAL DE TRAMO - REDUCCIÓN / Blind end - Offset Reducing Splice Plate

| CÓDIGO Ref.Code | MEDIDAS NOMINALES en mm Measurement in mm | |
|--------------------|--|----------------------|
| | ANCHO Width | ESPESOR Thickness |
| RFPS-025-Z | 25 | 0.71 |
| RFPS-050-Z | 50 | 0.71 |
| RFPS-075-Z | 75 | 0.71 |
| RFPS-100-Z | 100 | 0.71 |
| RFPS-150-Z | 150 | 0.71 |
| RFPS-200-Z | 200 | 0.71 |
| RFPS-300-Z | 300 | 0.89 |
| RFPS-450-Z | 450 | 0.89 |
| RFPS-600-Z | 600 | 0.89 |



EMBUDO PARA BAJADA EN FORMA PARALELA / Lengthwise Vertical Tee Down

| CÓDIGO Ref.Code | MEDIDAS NOMINALES en mm Measurement in mm | |
|--------------------|--|----------------------|
| | ANCHO Width | ESPESOR Thickness |
| EMPS-050-Z | 50 | 0.71 |
| EMPS-100-Z | 100 | 0.71 |
| EMPS-150-Z | 150 | 0.71 |
| EMPS-200-Z | 200 | 0.71 |
| EMPS-300-Z | 300 | 0.71 |
| EMPS-450-Z | 450 | 0.89 |
| EMPS-600-Z | 600 | 0.89 |



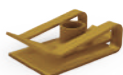
JUEGO DE BULONERÍA / Carriage Bolt with Nut

| CÓDIGO Ref.Code |
|--------------------|
| JB-CC-M6 |



TUERCA RETÉN UNIÓN TAPA / Nut Retainer

| CÓDIGO Ref.Code |
|--------------------|
| TRUTS-M6 |



TORNILLO CABEZA TANQUE PARA TUERCA RETEN / Bolt

| CÓDIGO Ref.Code |
|--------------------|
| TCT-M6X8 |



GRAMPA DE FIJACIÓN PARA CABLE EQUIPOTENCIAL / Earthing Screw

| CÓDIGO Ref.Code |
|--------------------|
| GFCE-B |



* Incluye bulonería
/ With Carriage bolt and nut

BANDA DIVISORIA
/ Divider Profile

CÓDIGO
Ref.Code

BDS01Z



ACOMETIDA DE TABLERO

/ Extension Horizontal Tee

| CÓDIGO Ref.Code | MEDIDAS NOMINALES en mm Measurement in mm | |
|--------------------|--|----------------------|
| | ANCHO Width | ESPESOR Thickness |
| ACPS-050-Z | 50 | 0.71 |
| ACPS-100-Z | 100 | 0.71 |
| ACPS-150-Z | 150 | 0.71 |
| ACPS-200-Z | 200 | 0.71 |
| ACPS-300-Z | 300 | 0.71 |
| ACPS-450-Z | 450 | 0.89 |
| ACPS-600-Z | 600 | 0.89 |



Grampas y Soportes

/ Clamps and Supports

SOPORTE SIMPLE
/ Overhead Hanger

| CÓDIGO Ref.Code | ANCHO Width (mm) |
|--------------------|---------------------|
| SS-050-G | 60 |
| SS-100-G | 110 |



SOPORTE MÉNSULA REFORZADA
/ Reinforced Wall Bracket

| CÓDIGO Ref.Code | ANCHO Width (mm) | Nº de CANTIDAD DE AGUJEROS Q and measurement of holes in mm |
|--------------------|---------------------|--|
| SR-130-G | 130 | 2 AGUJEROS DE 7x25 |
| SR-180-G | 180 | 2 AGUJEROS DE 10x30 |
| SR-230-G | 230 | 4 AGUJEROS DE 10x30 |
| SR-330-G | 330 | 4 AGUJEROS DE 10x30 |
| SR-480-G | 480 | 4 AGUJEROS DE 10x30 |
| SR-630-G | 630 | 4 AGUJEROS DE 10x30 |



**GRAMPA DE SUSPENSIÓN
PARA BANDEJA PERFORADA**
/ Overhead Hanger

| CÓDIGO Ref.Code | ANCHO Width (mm) |
|--------------------|---------------------|
| GSP-050-G | 60 |
| GSP-100-G | 110 |
| GSP-150-G | 160 |
| GSP-200-G | 210 |



SOPORTE MÉNSULA
/ Wall Bracket

| CÓDIGO Ref.Code | ANCHO Width (mm) | Nº de CANTIDAD DE AGUJEROS Q and measurement of holes in mm |
|--------------------|---------------------|--|
| S-130-Z | 130 | 2 AGUJEROS DE 7x25 |
| S-180-Z | 180 | 2 AGUJEROS DE 10x30 |
| S-230-Z | 230 | 2 AGUJEROS DE 10x30 |
| S-330-Z | 330 | 4 AGUJEROS DE 10x30 |



SOPORTE BAJO PISO
/ Floor Bracket

| CÓDIGO Ref.Code | RANGO DE ANCHO Width Range (mm) |
|--------------------|------------------------------------|
| SBP-050/150-Z | 50 - 150 |
| SBP-150/300-Z | 150 - 300 |
| SBP-300/600-Z | 300 - 600 |



SOPORTE ÁNGULO REGULABLE
/ Regulable Wall Bracket

| CÓDIGO Ref.Code | LARGO Length (mm) |
|--------------------|----------------------|
| SAR-150-G | 200 |
| SAR-200-G | 250 |
| SAR-300-G | 370 |
| SAR-450-G | 510 |
| SAR-600-G | 670 |



SOPORTE TRAPEZIO
/ Trapeze Hanger

| CÓDIGO Ref.Code | ANCHO Width (mm) |
|--------------------|---------------------|
| ST150Z | 200 |
| ST200Z | 250 |
| ST300Z | 350 |
| ST450Z | 500 |
| ST600Z | 650 |



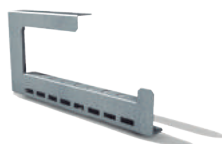
SOPORTE CAJA UNIVERSAL SMARTTRAY
/ Universal Smarttray Mounting Plate

| CÓDIGO Ref.Code | DIMENSIONES Dimensions (mm) |
|--------------------|--------------------------------|
| SCUS-130-Z | 125x130 |
| SCUS-190-Z | 190x190 |



SOPORTE UNIVERSAL SMARTTRAY
/ Universal Smarttray Wall Bracket

| CÓDIGO Ref.Code | ANCHO Width (mm) |
|--------------------|---------------------|
| SUS-050-Z | 50 |
| SUS-100-Z | 100 |
| SUS-150-Z | 150 |
| SUS-200-Z | 200 |
| SUS-300-Z | 300 |



**SOPORTE CAJA UNIVERSAL SMARTTRAY
CON ENTRADA PRENSACABLE**
/ Smarttray Mounting Plate with Quick Fastening

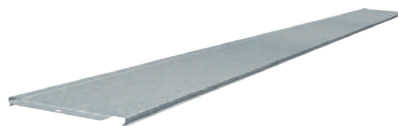
| CÓDIGO Ref.Code | DIMENSIONES Dimensions (mm) |
|--------------------|--------------------------------|
| SCUSP-130-Z | 125x130 |



TAPA CIEGA TRAMO RECTO

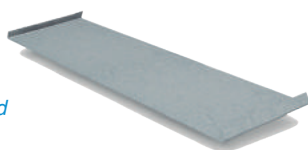
/ Cover

| CÓDIGO Ref.Code | ANCHO Width | MEDIDAS NOMINALES en mm Measurement in mm | |
|--------------------|----------------|--|--------------------|
| | | ESPESOR Thickness | LONGITUD Length |
| TTRS-050-22-Z | 50 | 0.71 | 3000 |
| TTRS-100-22-Z | 100 | 0.71 | 3000 |
| TTRS-150-22-Z | 150 | 0.71 | 3000 |
| TTRS-200-22-Z | 200 | 0.71 | 3000 |
| TTRS-300-22-Z | 300 | 0.71 | 3000 |
| TTRS-450-20-Z | 450 | 0.89 | 3000 |
| TTRS-600-20-Z | 600 | 0.89 | 3000 |

**TAPA DE ESLABÓN UNIVERSAL
PARA CURVA ARTICULADA**

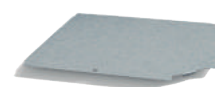
/ Cover for Universal Link Vertical Bend

| CÓDIGO Ref.Code | ANCHO Width (mm) |
|--------------------|---------------------|
| TEPS-050-Z | 50 |
| TEPS-100-Z | 100 |
| TEPS-150-Z | 150 |
| TEPS-200-Z | 200 |
| TEPS-300-Z | 300 |
| TEPS-450-Z | 450 |
| TEPS-600-Z | 600 |

**TAPA PARA CURVA PLANA A 90°**

/ Cover for 90° Elbow

| CÓDIGO Ref.Code | MEDIDAS NOMINALES en mm Measurement in mm | |
|--------------------|--|----------------------|
| | ANCHO Width | ESPESOR Thickness |
| TCPS-050-90-Z | 50 | 0.71 |
| TCPS-100-90-Z | 100 | 0.71 |
| TCPS-150-90-Z | 150 | 0.71 |
| TCPS-200-90-Z | 200 | 0.71 |
| TCPS-300-90-Z | 300 | 0.71 |
| TCPS-450-90-Z | 450 | 0.89 |
| TCPS-600-90-Z | 600 | 0.89 |



* Ver figura 4 en Aplicaciones destacadas
/ See figure 4 in featured applications

TAPA PARA CURVA PLANA A 45°

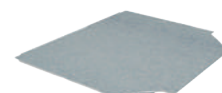
/ Cover for 45° Elbow

| CÓDIGO Ref.Code | MEDIDAS NOMINALES en mm Measurement in mm | |
|--------------------|--|----------------------|
| | ANCHO Width | ESPESOR Thickness |
| TCPS-050-45-Z | 50 | 0.71 |
| TCPS-100-45-Z | 100 | 0.71 |
| TCPS-150-45-Z | 150 | 0.71 |
| TCPS-200-45-Z | 200 | 0.71 |
| TCPS-300-45-Z | 300 | 0.71 |
| TCPS-450-45-Z | 450 | 0.89 |
| TCPS-600-45-Z | 600 | 0.89 |

**TAPA DE UNIÓN TEE**

/ Cover for Horizontal Tee

| CÓDIGO Ref.Code | MEDIDAS NOMINALES en mm Measurement in mm | |
|--------------------|--|----------------------|
| | ANCHO Width | ESPESOR Thickness |
| TTPS-050-Z | 50 | 0.71 |
| TTPS-100-Z | 100 | 0.71 |
| TTPS-150-Z | 150 | 0.71 |
| TTPS-200-Z | 200 | 0.71 |
| TTPS-300-Z | 300 | 0.71 |
| TTPS-450-Z | 450 | 0.89 |
| TTPS-600-Z | 600 | 0.89 |

**TAPA DE UNIÓN CRUZ**

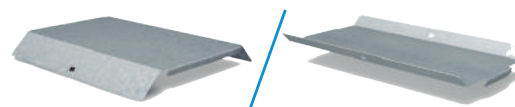
/ Cover for Horizontal Cross

| CÓDIGO Ref.Code | MEDIDAS NOMINALES en mm Measurement in mm | |
|--------------------|--|----------------------|
| | ANCHO Width | ESPESOR Thickness |
| TXPS-050-Z | 50 | 0.71 |
| TXPS-100-Z | 100 | 0.71 |
| TXPS-150-Z | 150 | 0.71 |
| TXPS-200-Z | 200 | 0.71 |
| TXPS-300-Z | 300 | 0.71 |
| TXPS-450-Z | 450 | 0.89 |
| TXPS-600-Z | 600 | 0.89 |

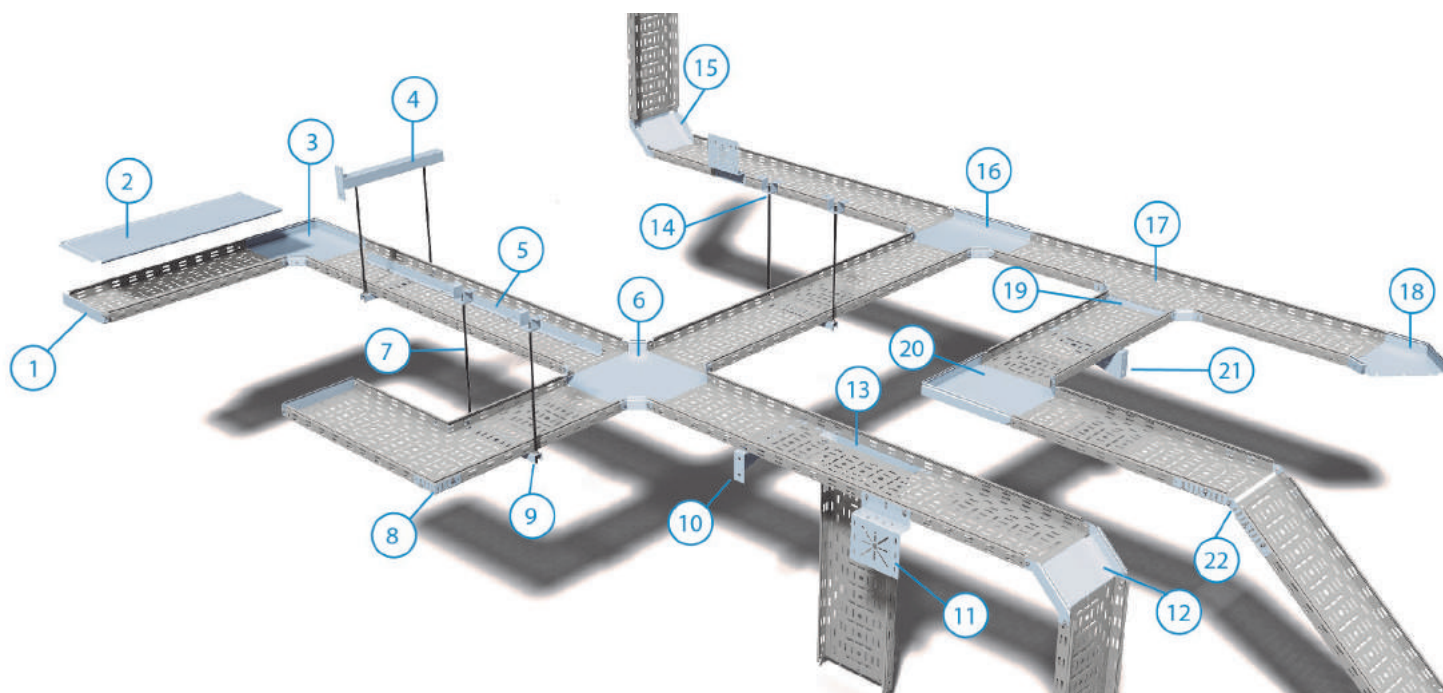
**TAPA PARA CURVA VERTICAL**

/ Cover for Vertical Elbow

| CÓDIGO Ref.Code | MEDIDAS NOMINALES en mm Measurement in mm | |
|--------------------|--|----------------------|
| | ANCHO Width | ESPESOR Thickness |
| TCUPS-050-D-Z | 50 | 0.71 |
| TCUPS-100-D-Z | 100 | 0.71 |
| TCUPS-150-D-Z | 150 | 0.71 |
| TCUPS-200-D-Z | 200 | 0.71 |
| TCUPS-300-D-Z | 300 | 0.71 |
| TCUPS-450-D-Z | 450 | 0.89 |
| TCUPS-600-D-Z | 600 | 0.89 |



D*: Es para Descendente. En caso de requerir una
Tapa Curvar Vertical Ascendente, cambiar la D por la A
/ D*: is for outside elbow. Change D for A,
in case you need a cover for Vertical Inside Elbow



- | | |
|--|---|
| 1. Finales para tramo recto y accesorios (RFPS) / Blind end | 12. Curva vertical descendente (CUPSD) / Vertical Outside Elbow |
| 2. Tapa ciega tramo recto (TTRS) / Cover | 13. Derivación común (DCPS) / Extension horizontal tee |
| 3. Curva plana a 90° / Elbow 90° | 14. Grampa (G-08) / Clamp |
| 4. Soporte de perfil (SC) / Bracket for C- Rail | 15. Curva vertical ascendente (CUPSA) / Vertical Inside Elbow |
| 5. Banda divisoria (BDS) / Divider | 16. Unión Tee (TPS) / Horizontal Tee |
| 6. Unión cruz (XPS) / Horizontal Cross | 17. Tramo recto perforado (TRPS) / Smarttray Cable Tray |
| 7. Varilla roscada (VR) / Threaded rod | 18. Curva plana a 45° (CPS) / Elbow 45° |
| 8. Unión lateral (ULSZ) / Intelligent splice plate | 19. Derivación común (DCPS) / Extension horizontal tee |
| 9. Soporte trapecio (ST) / Trapeze hanger | 20. Curva plana a 90° (CPS) / Elbow 90° |
| 10. Soporte ménsula (S) / Wall bracket | 21. Soporte ménsula reforzado (SR) / Reinforced wall bracket |
| 11. Soporte para Caja Universal Smarttray (SCUS) / Universal Bracket | 22. Unión lateral (ULSZ) / Intelligent splice plate |



GARANTÍA SAMET
/WARRANTY SAMET



VELOCIDAD
/SPEED



SIMPLICIDAD
/SIMPLICITY



SEGURIDAD
/SAFETY



PROVISIÓN RÁPIDA
/FAST PROVISION

1 UNIÓN LATERAL INTELIGENTE Conocé los 3 usos en éstas imágenes:
/ Intelligent Splice Plate: discover the 3 different applications



a ● TRAMO CON TRAMO
/ Join cut tray with tray



b ● REALIZÁ CAMBIOS DE NIVEL
UNIENDO DOS DE ELLAS
/ By joining two splice plates you can do
a change of level

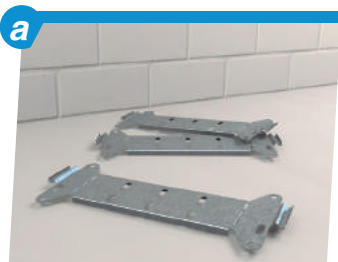


c ● SU TROQUEL PERMITE REALIZAR
CURVAS SEGUN EL ANGULO
QUE VOS PRECISES
/ The intelligent splice plate allows to
improvize elbows

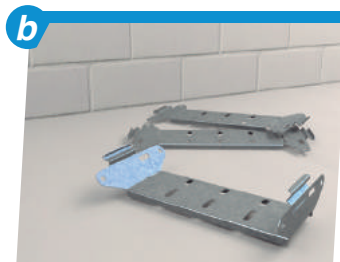
2 DERIVACIÓN UNIVERSAL Una pieza para toda las medidas:
/ Universal Extension Horizontal Tee: chose the measure you need



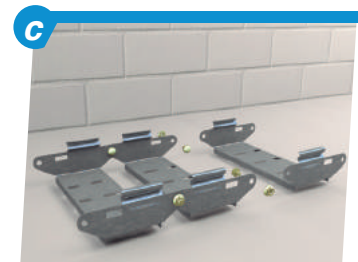
3 ESLABONES UNIVERSALES PARA CURVAS ARTICULADAS
/ Universal Link for Adjustable Vertical Bend



a ● SIN DIFERENCIA ENTRE EXTREMOS
E INTERMEDIOS
/ No difference between
endings of beginnings



b ● MISMA BULONERÍA QUE TRAMOS
Y ACCESORIOS SMARTTRAY
/ Same bolts than Smarttray



c ● PERSONALIZA TU CURVA! ARMALA CON
LA CANTIDAD DE ESLABONES QUE
LA INSTALACIÓN REQUIERA.
/ Add or take links to build a personalized
vertical bend

4 TAPAS DE ESLABONES UNIVERSALES PARA CURVAS VERTICALES
/ Covers for Adjustable Vertical Bends

